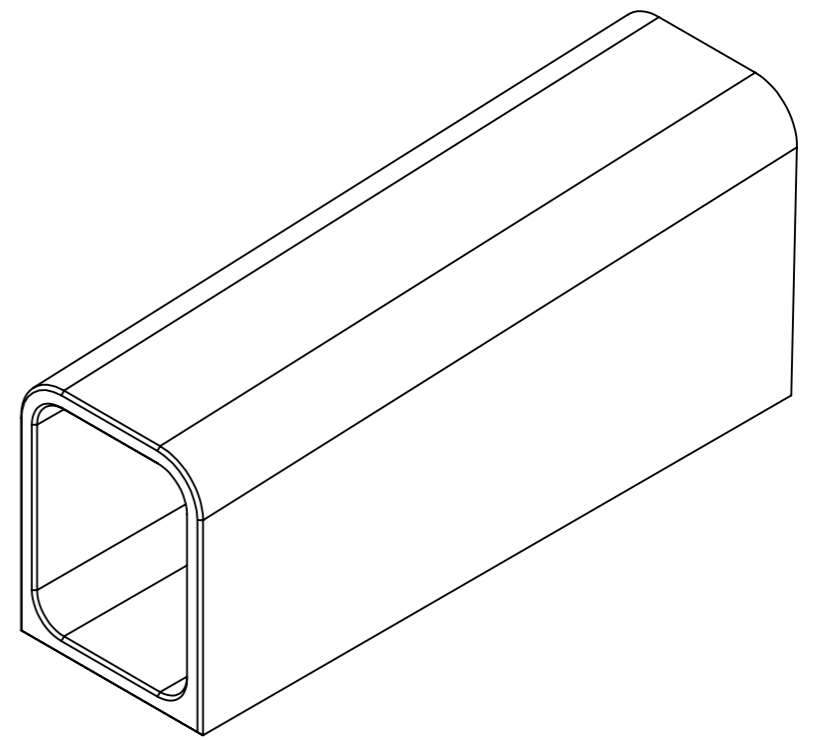
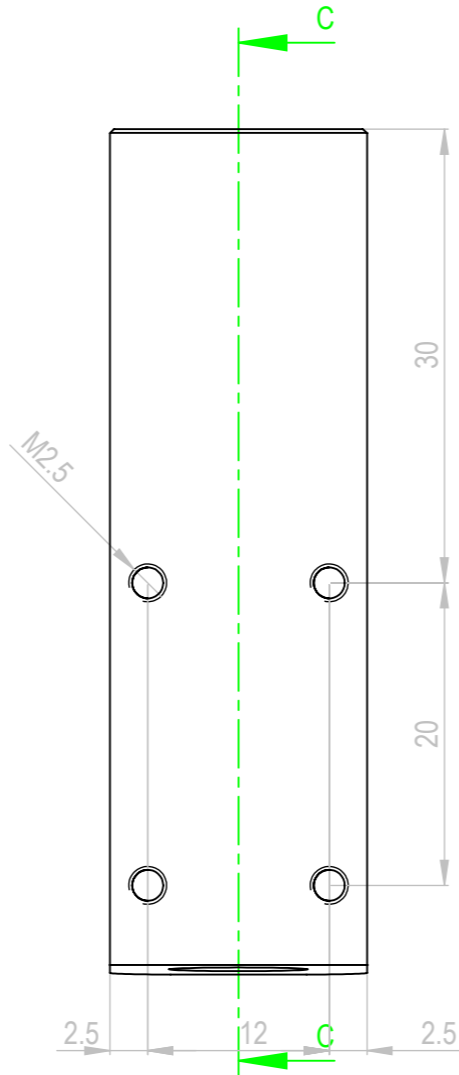
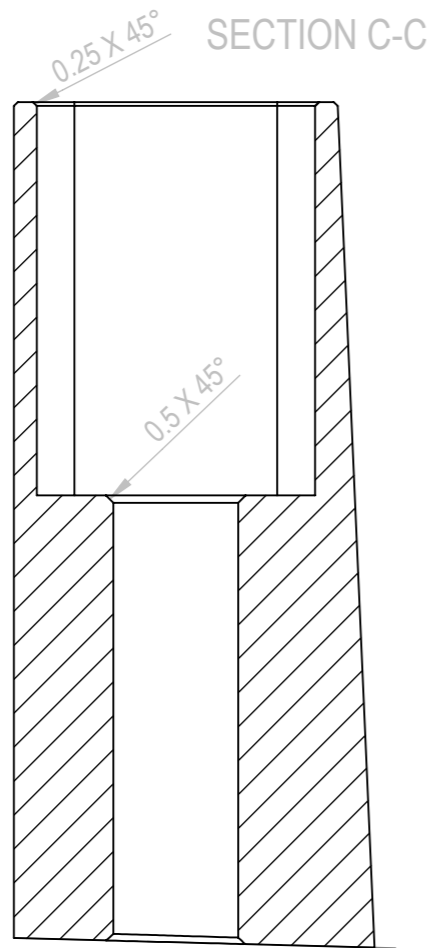
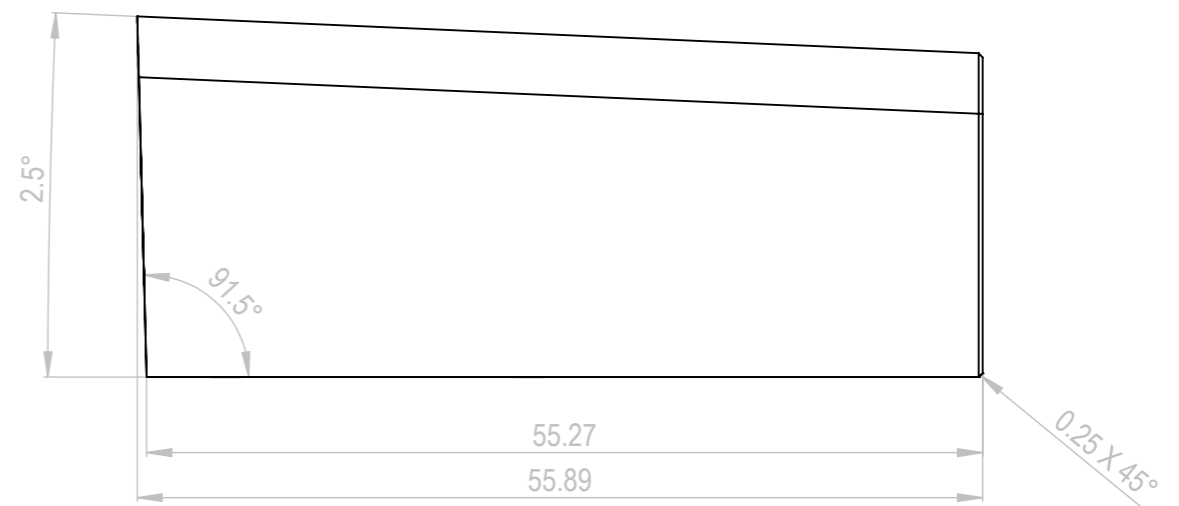
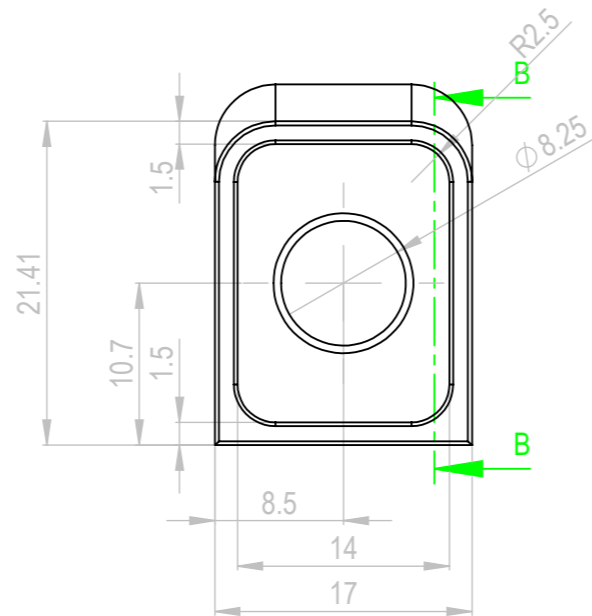
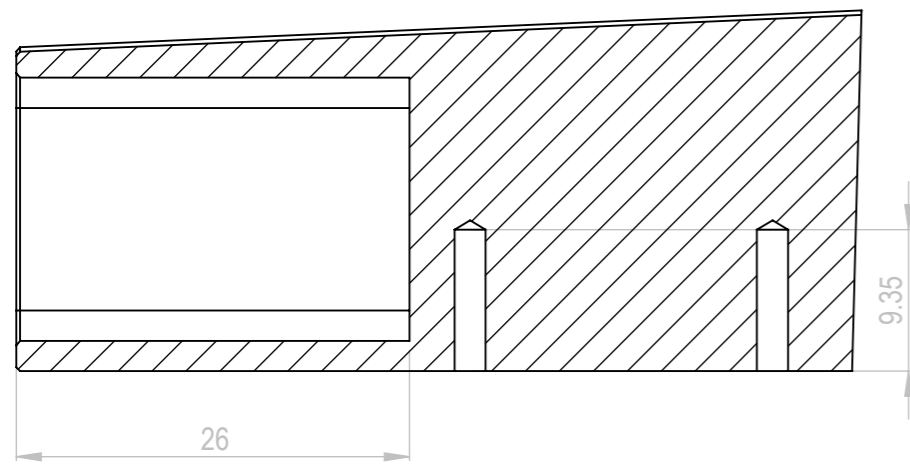


NEXT HIGHER ASSY:

ASSOCIATED FILES:

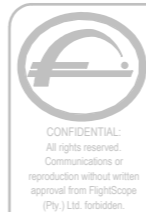


SECTION B-B



NOTES:

1. MATERIAL: ALUMINIUM 6082,
2. MATERIAL CERTIFICATION REQUIRED
3. FINISH: NATURAL ANODISE,
4. BREAK (0.1~0.2) SHARP EDGES & RADIUS
5. REMOVE ALL BURRS
6. FIRST ARTICAL INSPECTION REPORT ON ALL DIMENSIONS
7. GENERAL OVER CHAMFER 0.25mmX0.25mm
8. QTY PER UNIT: 2



MATERIAL:

TEXTURE:
FINISH:
WEIGHT(g):

TOLERANCE

UNLESS OTHERWISE SPECIFIED
DIMENSIONS ARE IN MILLIMETERS
LINEAR

0 = ±0.5
0.0 = ±0.25
0.00 = ±0.15
0.000 = ±0.015

SURFACE =
S/METAL BEND $\leq \pm 0.2^\circ$
MACHINED ANGLE $\leq \pm 0.2^\circ$

DESCRIPTION

E47-VZ430-A

PRT. NO

FS Xi FOOT OUTER
GUIDE

FIRST ANGLE
PROJ.



DO NOT SCALE DRAWING

SCALE

2:1

SHEET

1 OF 1

PAPER SIZE

A3

OFFICIAL RELEASE

13/09/2013

HB

TJ

HB

DETAIL

DATE

DRW

CH'CKD

ENG