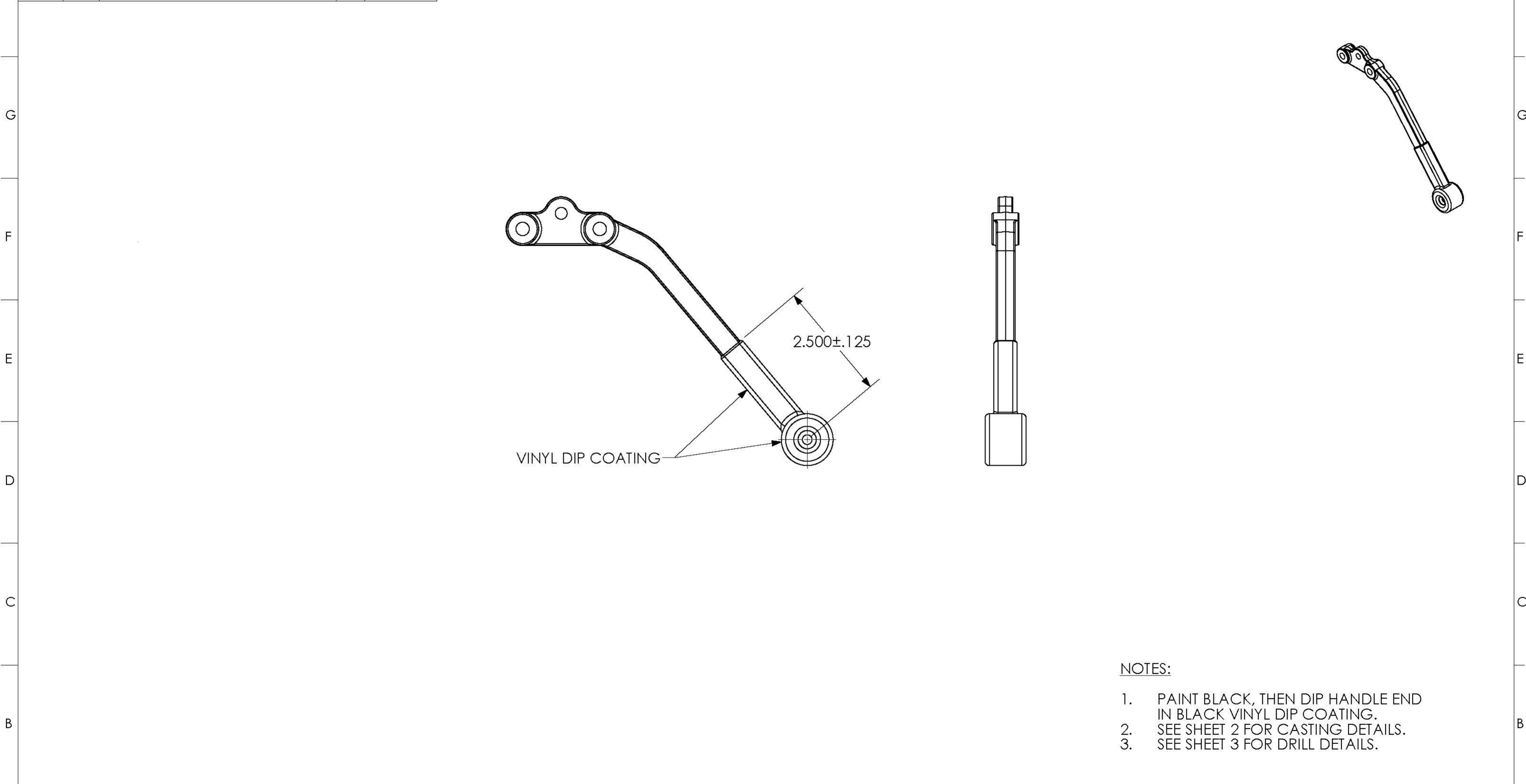
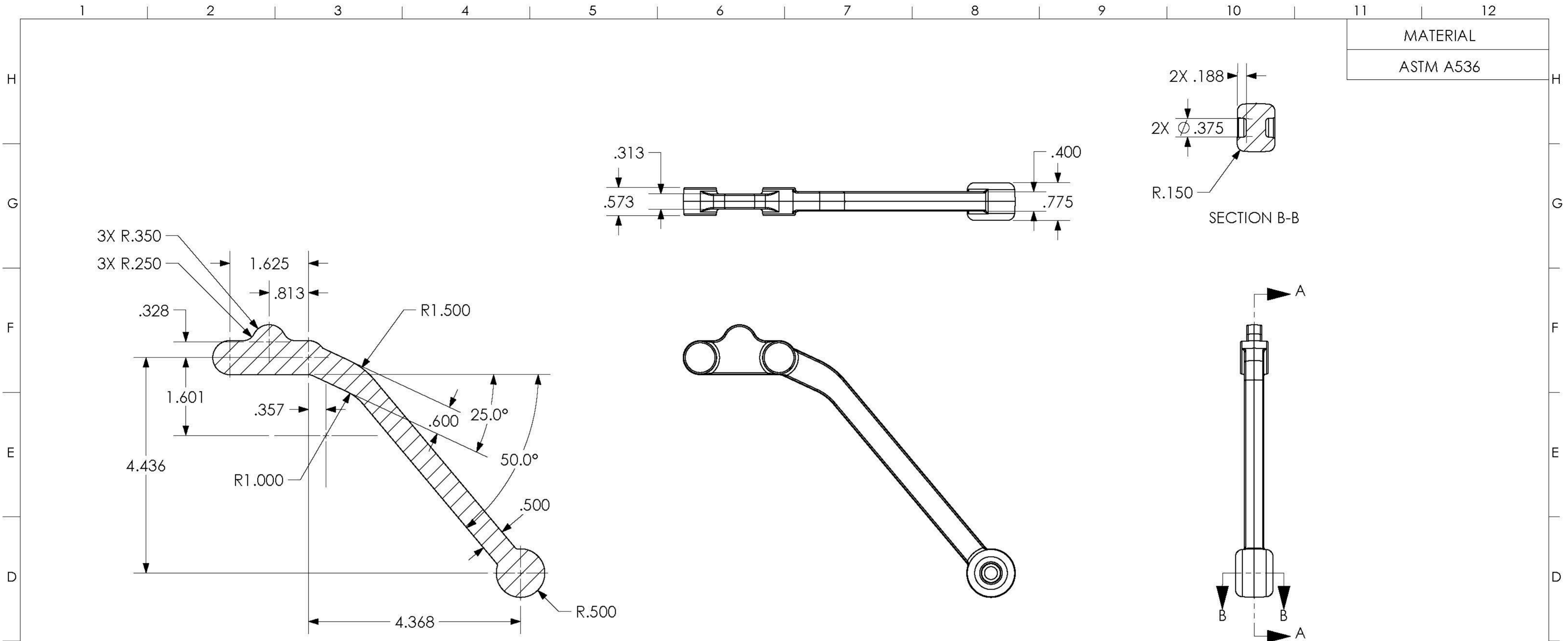


REVISIONS					MATERIAL	
ECN	REV	DESCRIPTION	BY	DATE	ASTM A536	
16303	A	RELEASE DRAWING	MDL	6/9/2014		
16556	B	ADDED DETAILS FOR CASTING	MDL	7/21/2014		



- NOTES:**
1. PAINT BLACK, THEN DIP HANDLE END IN BLACK VINYL DIP COATING.
 2. SEE SHEET 2 FOR CASTING DETAILS.
 3. SEE SHEET 3 FOR DRILL DETAILS.

PAINT BLACK PER SPECIFICATION DRAWING 1006048		PAINT SPECIFICATION DRAWING 1006048		DIMENSIONS ARE IN INCHES UNLESS OTHERWISE SPECIFIED										APPROVALS		DATE		140630-1						
GENERAL FABRICATION TOLERANCE - INCH									SURFACE: 250 ✓		GENERAL MACHINING TOLERANCE						SURFACE: 125 ✓		DRAWN BY MDL		06/09/2014		LEVER, FOR 141000 BOX, 50 DEGREES	
>	0.000	3.000	12.000	24.000	48.000	96.000	120.000	240.000	0.000	1.000	3.000	6.000	12.000	36.000	CHECKED BY TWJ		07/23/2014							
≤	3.000	12.000	24.000	48.000	96.000	120.000	240.000	~	1.000	3.000	6.000	12.000	36.000	~	PURCHASED PARTS / MULTIPLE									
±	0.015	0.031	0.063	0.094	0.125	0.188	0.250	0.500	0.005	0.010	0.015	0.031	0.063	0.094	THIRD ANGLE PROJECTION		SHT SIZE: B		SHT 1 OF 3		PART WEIGHT: 0.68 LBS		REV B	
ANGLE	±0.5°		±1.0°		±2.0°		±3.0°		±0.1°		±0.3°		±0.5°		SHEET SCALE: 1:4									



MATERIAL
ASTM A536

CASTING DETAILS

- NOTES:
- 3° DRAFT MAX.
 - ALL FEATURE FILLETS TO BE .060 MAX.
 - ALL FEATURE EDGE RADII TO .030 MAX. UNLESS OTHERWISE NOTED.
 - PART TO FREE OF FLASH AND IMPERFECTIONS.

PAINT BLACK PER SPECIFICATION DRAWING 1006048

GENERAL FABRICATION TOLERANCE - INCH									SURFACE: $\sqrt{250}$						GENERAL MACHINING TOLERANCE						SURFACE: $\sqrt{125}$					
>	0.000	3.000	12.000	24.000	48.000	96.000	120.000	240.000	0.000	1.000	3.000	6.000	12.000	36.000	0.000	1.000	3.000	6.000	12.000	36.000	0.000	1.000	3.000	6.000	12.000	36.000
≤	3.000	12.000	24.000	48.000	96.000	120.000	240.000	~	1.000	3.000	6.000	12.000	36.000	~	1.000	3.000	6.000	12.000	36.000	~	1.000	3.000	6.000	12.000	36.000	~
±	0.015	0.031	0.063	0.094	0.125	0.188	0.250	0.500	0.005	0.010	0.015	0.031	0.063	0.094	0.005	0.010	0.015	0.031	0.063	0.094	0.005	0.010	0.015	0.031	0.063	0.094
ANGLE	±0.5°			±1.0°			±2.0°			±3.0°			±0.1°			±0.3°			±0.5°							

DIMENSIONS ARE IN INCHES UNLESS OTHERWISE SPECIFIED

DIMENSIONS APPLY TO FINISHED PART. ROUGH CUTS MUST INCLUDE APPROPRIATE STOCK ALLOWANCE FOR MACHINED PARTS.

(REFERENCE DIMENSIONS)

REFER TO TABLES FOR GENERAL TOLERANCES

SHEET SCALE: 1:4

APPROVALS	DATE
DRAWN BY MDL	06/09/2014
CHECKED BY TWJ	07/23/2014

140630-1

LEVER, FOR 141000 BOX, 50 DEGREES

PURCHASED PARTS / MULTIPLE

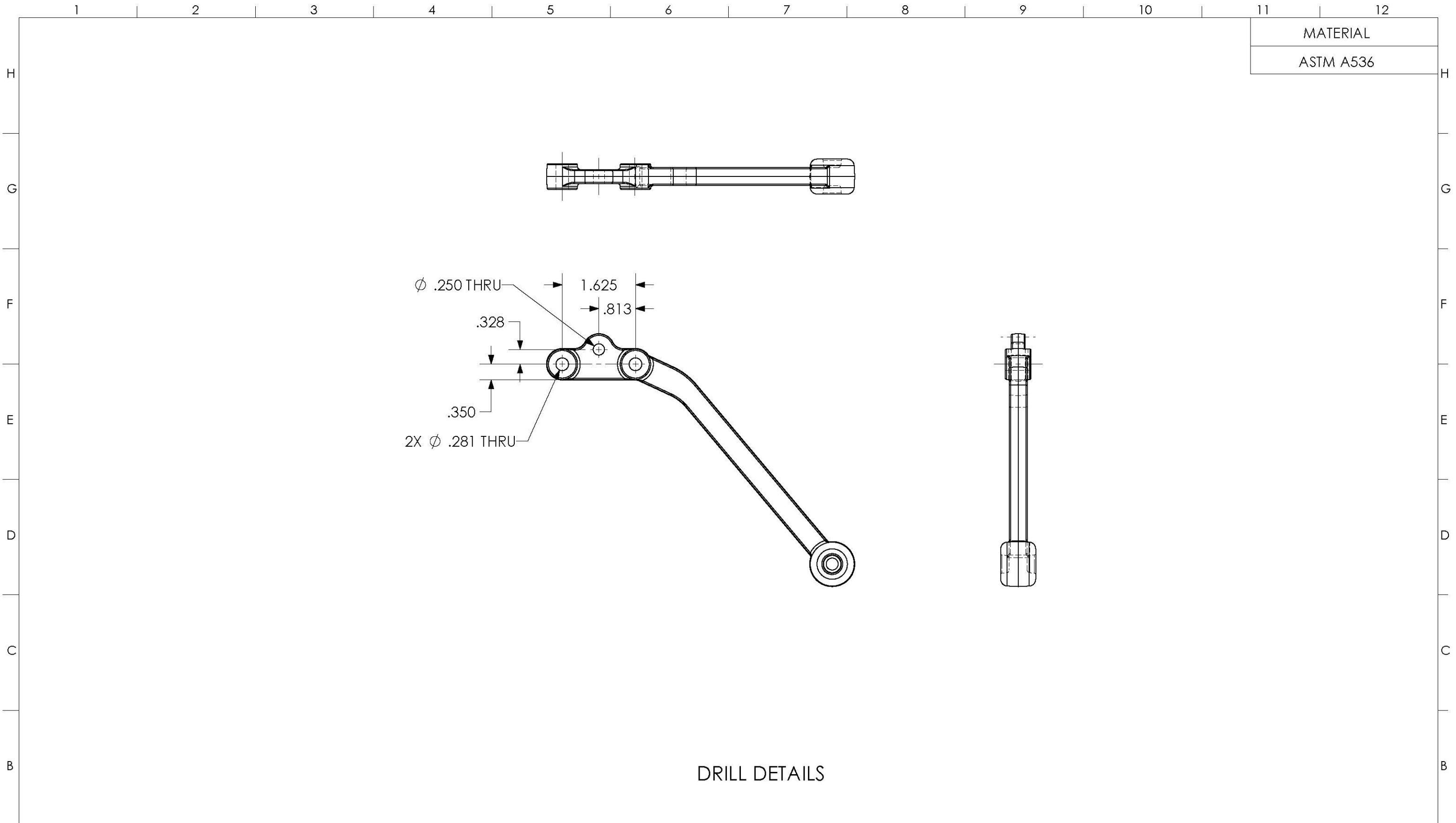
REV B

THIRD ANGLE PROJECTION

SHT SIZE: B

SHT 2 OF 3

PART WEIGHT: 0.68 LBS



MATERIAL
ASTM A536

DRILL DETAILS

PAINT BLACK PER PAINT SPECIFICATION DRAWING 1006048

GENERAL FABRICATION TOLERANCE - INCH								SURFACE: $\sqrt{250}$		GENERAL MACHINING TOLERANCE					SURFACE: $\sqrt{125}$	
>	0.000	3.000	12.000	24.000	48.000	96.000	120.000	240.000	0.000	1.000	3.000	6.000	12.000	36.000		
≤	3.000	12.000	24.000	48.000	96.000	120.000	240.000	~	1.000	3.000	6.000	12.000	36.000	~		
±	0.015	0.031	0.063	0.094	0.125	0.188	0.250	0.500	0.005	0.010	0.015	0.031	0.063	0.094		
ANGLE	±0.5°		±1.0°		±2.0°		±3.0°		±0.1°		±0.3°		±0.5°			

DIMENSIONS ARE IN INCHES UNLESS OTHERWISE SPECIFIED
 DIMENSIONS APPLY TO FINISHED PART. ROUGH CUTS MUST INCLUDE APPROPRIATE STOCK ALLOWANCE FOR MACHINED PARTS.
 (REFERENCE DIMENSIONS)
 REFER TO TABLES FOR GENERAL TOLERANCES
 SHEET SCALE: 1:4

APPROVALS	DATE
DRAWN BY MDL	06/09/2014
CHECKED BY TWJ	07/23/2014

140630-1
 LEVER, FOR 141000 BOX, 50 DEGREES
 PURCHASED PARTS / MULTIPLE
 PART WEIGHT: 0.68 LBS
 REV B

A

A